



**WELCOME  
TO  
MULTITECH TOOLS**

<https://www.multitechtools.in/>



# Introduction

MULTI TECH TOOLS (ISO 9001-2015) started in the year 1995 by Mr. M.SANKAR Founder, Mr. S.HARIHARAN CEO & Mr. S.DINAKARAN COO

We are one of the reputed tool manufacturers providing a large selection of precise machined components and cutting tools.



## Vision

- ◀ We are committed to exceed your expectations with extraordinary service and exceptional technical support to ensure your business success.
- ◀ What we really want is to be a partner to our customers, not merely a vendor providing commodity products at commodity prices.
- ◀ We want to be a partner who understands our customers' industries, and then we can deliver materials and services uniquely fitted to these demands.



## Mission

- ◀ To be a Prime leader in the manufacturing of precision machined components and assemblies.
- ◀ We will work to exceed all the expectations of our customers, in terms of Quality, Delivery and Cost.
- ◀ This will be Accomplished through continuous improvement as well as keeping up to date with the latest equipment and facilities that the marketplace has to offer.

# FACILITIES

# Quality Lab



## Mitutoyo LH-600E - High performance 2D linear height measuring-38 inch)

- ◀ Excellent accuracy of  $(1.1+0.6L/600)$  um with 0.1 um/0.5 um resolution/repeatability
- ◀ Perpendicularity (frontal) of 5 um and straightness of 4 um are guaranteed

## Mitutoyo HD-24" AX - Digimatic Height gauge - 24 inch

- ◀ Two-directional touch-signal probe is an optional accessory. It can quickly and accurately measure steps, inside width, and outside width.
- ◀ SPC data output.



## DYNASCAN PH 300 - Horizontal profile projector

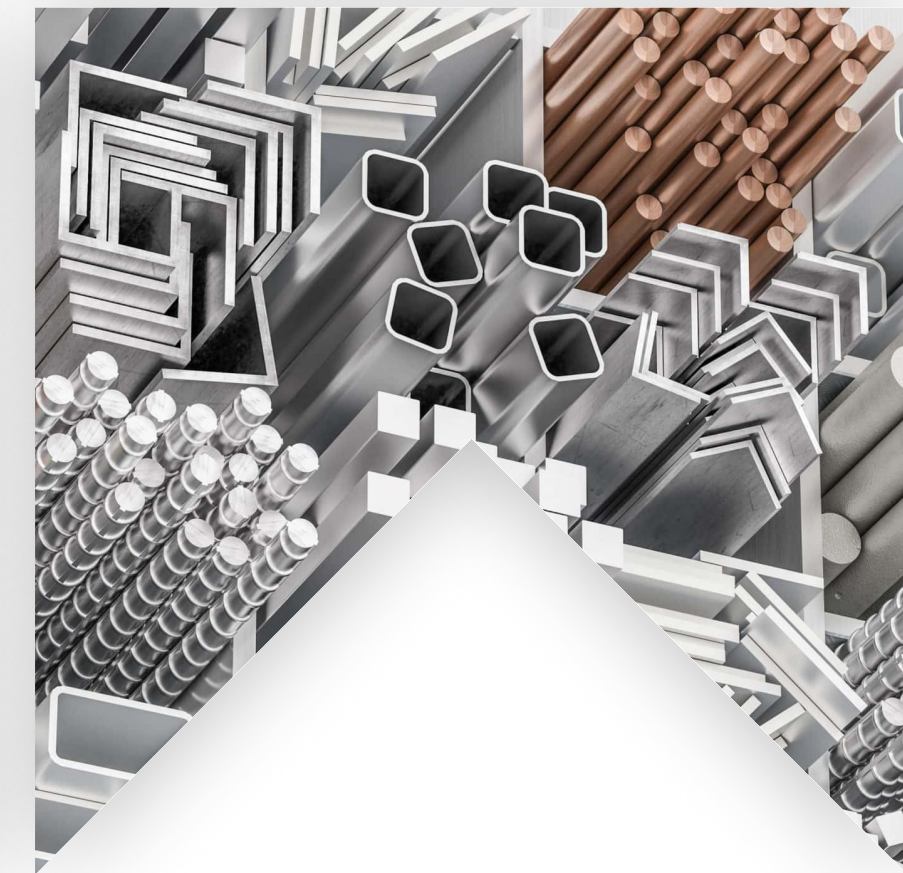
- ◀ Compact Profile Projector with Horizontal light path .
- ◀ Screen size 300mm.
- ◀ Fitted with special light controllers to give 5x times bulb life.
- ◀ Glass Measuring Scales From Fagor Spain 1 micron accuracy.

# Machine Details

PURPOSE	MAKE & MODEL	RANGE	NO. OF AXIS	NO. OF MACHINES
TURNING	MAZAK QT - 30	Dia - 410mm, Length - 1000 mm	2	1
	AMS JOBBER XL	Dia - 260mm, Length - 400 mm	2	1
	AMS SJE10 LM	Dia - 350mm, Length - 643mm	2	1
	LOKESH TL30	Dia - 380mm, Length - 515mm	2	1
	LMW LX20T L5	Dia - 320mm, Length - 625mm	2	1
MILLING	YCM MV 76A	X-762mm,Y-510mm,Z-560 mm, 3rd Axis UCAM Rotary table	3	1
	TAL V650	X-1200mm, Y- 650mm,Z-675 mm 4th axis Dia 250 UCAM Rotary table	4	1
	TAL V510	X-760mm, Y-510mm,Z-560 mm 4th Axis DIA 200 UCAM Rotary table	4	1
	AMS MCV 450	X-760mm,Y-500mm,Z-600 mm, 4th axis Dia 250 UCAM Rotary table	4	1
	AMS MCV320	X-600mm, Y-350mm,Z-350 mm,4th axis Dia200 Nikken rotary table	4	1
	LMV JUNIOR	X-750mm, Y-500mm,Z-600 mm,4th axis Dia200 UCAM rotary table	4	1
	AMS MCV 450	X - 760mm, Y - 500 mm,Z- 600mm, 5th axis UCAM rotary table swing 250mm	5	1
	BFW BMV 60+	X - 1050mm, Y - 610 mm,Z- 610mm, 5th axis UCAM rotary table swing 450mm	5	1

# Materials

- ❖ HSS M2
- ❖ HSS M35
- ❖ HSS M42
- ❖ EN ALLOYS
- ❖ MS BRIGHT
- ❖ CAST IRON
- ❖ ALUMINIUM ALL GRADE
- ❖ Hc Hcr
- ❖ OHNS
- ❖ HARD DIE STEELS
- ❖ STAINLESS STEEL 304, 304L, 316, 316L, 318, 321, 325, 327
- ❖ STEEL : 410, 416, 420, 422, 440C, 17-4 Ph
- ❖ F22, P22, WC9
- ❖ ALLOY 6
- ❖ Hast Alloy 'C'
- ❖ Monel 400, K500
- ❖ Inconel



# Value Added Service

WELDING & HEAT TREATMENT	COATING/ PLATING	MACHINING	TESTING
Heat Treatment	All types of general coatings	Surface & Cylindrical Grinding	Metallurgical, Mechanical Testing and (Intergranular Corrosion)IGC analysis
Hard Facing of Stellite 6&21, CoCr-A	Chrome Plating	Honning	PMI (Positive Material Identification)
Nitriding	Zinc Plating Export Blackening	EDM (Sparking)	
Welding of ferrous and non-ferrous	Phospating	EDM (Wire)	
Boronising	Magnese Phosphating	CNC Laser Cutting	
Cladding	Electro Nickel Plating (ENC)	Tin Coating /Gear Cut Ultra Coating	



## Welding



Stellite welded clamp

## Heat Treatment



Heat treated finished component



## Value body

Value body size 3" 4"

## Rotary value body

Sizes: 2" to 12"

Types: Rotary Valve



**Cage Sleeve**



**30" Cage**



**Groove Cage**



**Window Milling  
Cage**



## Nitriding

Nitriding is a heat treating process that diffuses nitrogen into the surface of a metal to create a case-hardened surface. These processes are most commonly used on low-carbon, low-alloy steels.

Sizes: 1 to 30"

Cage Material: 316, CF8M, CF3M, WCB, F22

Types: Drill hole cage, Portal cage



## Plug with contour profile

Sizes: 1 to 6"

Material: 316, CF8M, CF3M - Stellite Welding  
Process 304, 321, 327, 174PH, 410, 416, 420, 440  
- Heat treatment process

Types: Whisper-111, Cavitrol-III, Linear,  
Balanced, Micro form



Sizes: 1 to 12"

Material: 316, CF8M, CF3M - Stellite Welding  
Process 304, 321, 327, 174PH, 410, 416, 420, 440  
- Heat treatment process

Types: Whisper-111, Cavitrol-III, Linear, Balanced

## Boronishing

Boriding or Boronizing process uses specially formulated boron-yielding material along with activators and heated to temperatures between 800 and 920°C. Boron atoms diffuses into the substrate, forming very hard borides interstitially within the surface of the material.

- Very hard surface layer (1200-2200 HV)
- Case depth: 10 to 500 microns (500 micron for special cases)
- Low coefficient of friction
- Acid resistance
- Erosion resistance



BEARING SEAL



THRUST BEARING



THRUSTPLATE

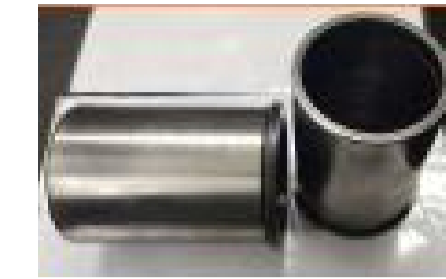
Before Boronishing



SLEEVE



HALF RING



After Boronishing



## Solid V-PUP value plug

Sizes: 4"

Material: CF8M

Types: Quick opening value plug



## Value plug

Sizes: 2"

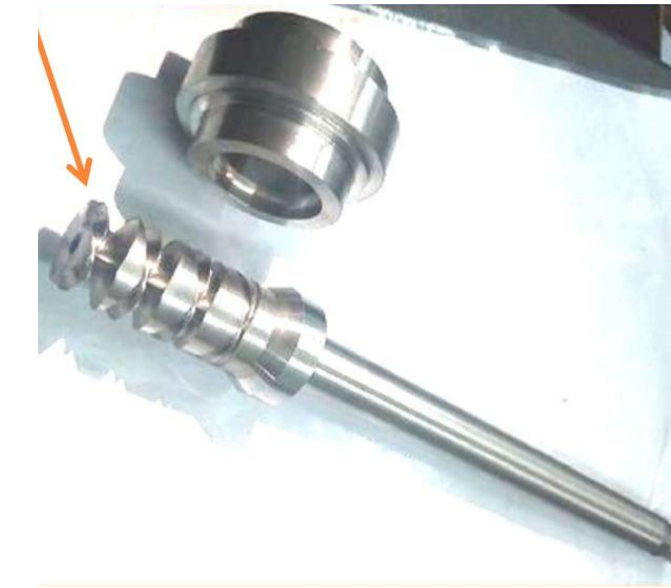
Material: 316

Types: Hard faced flow down dirty service trim

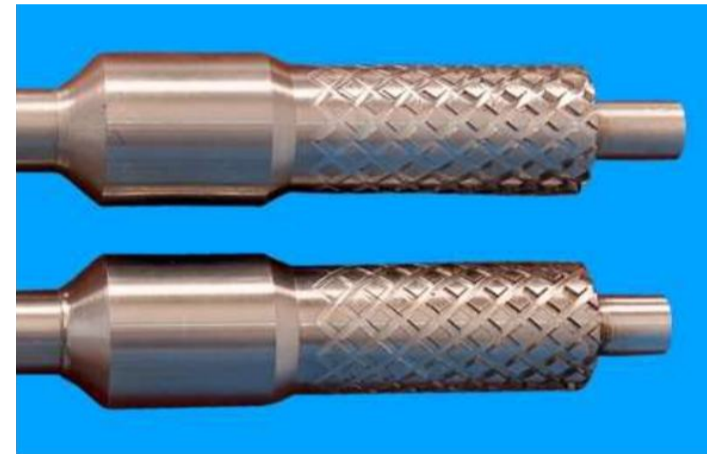
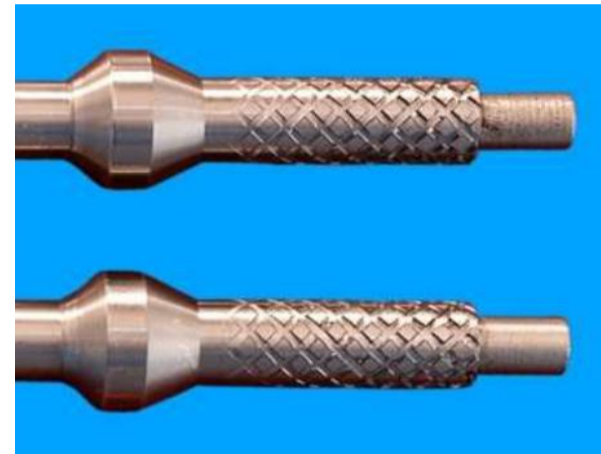




Seat&plug



V Profile plug



Stack Trim 12 Turns(Disc), 1.375"

Matl: 316



Baffle plate 30"



## Yoke Actuator

Sizes: 34i to 74i"  
Cage Material: Iron ASTM A 48 Class 30  
Types: LAD, LAC, MEW, MFE, LGV, LGU, 2856A



## Housing

Sizes: 1, 2, 3"  
Cage Material: Iron ASTM A 48 Class 30  
Types: LAD, LAC, MEW, MFE, LGV, LGU, 2856A



Pipe sensors



Spigot body&cover



## Chrome plating

Chrome plating (less commonly chromium plating), often referred to simply as chrome, is a technique of electroplating a thin layer of chromium onto a metal object

- Hard chrome plating (from 0.020 to 0.127 mm)
- Thin Dense chrome Plating (from 0.005 to 0.015 mm)

Sizes: 2 to 24"

Cage Material: CF8M, 316, CF3M

Types: Drill hole cage, Ported cage ( Hard chrome/ Flash)



## Load Ring

Sizes: 8"

Cage Material: CB7CU-1

## Manganese Phosphating

Phosphating is a chemical process for treating the surface of steel, where barely soluble metal-phosphate layers are formed on the base material..



SEAL RETAINER TRIPLE OFFSET



BONNET EXTN 12"

## Zinc Plating

Zinc plating, a process also known as galvanization, is the deposition of a thin layer of aluminum onto a metal component to provide a protective layer.

The outer surface of the zinc coating oxidizes to form zinc oxide, which results in a matte silver-colored finish

ZINC-BLUE TRIVALENT CHROMATE PASSIVATION



Dowel pin



Adapter



Puller, LPT MODULE STATOR

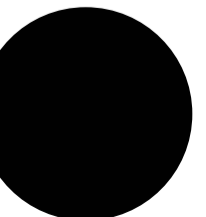
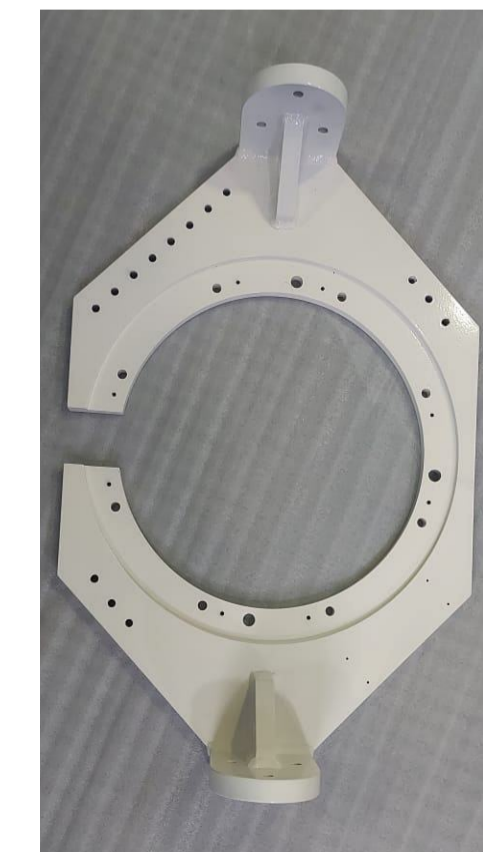


F12 BASE PLATE

PULLER, NO.2 CARBON SEAL



TURNOVER ADAPTOR





PULLE, NO3 BALL HANDLE  
ROLLER BEARING INNER  
RACES

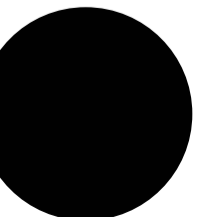
BOLT



PULLER, BEARING-SPHERICAL,  
BELLCRANK HPC



LIFTING BRACKET





FIXTURE RTNR-NO 4 BRG INNER RACE /OIL SCOOP/  
ROTATING SEAL/FWD SEAL



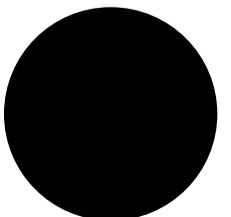
FIXTURE REMOVE-NO 04 SEAL RUNNER



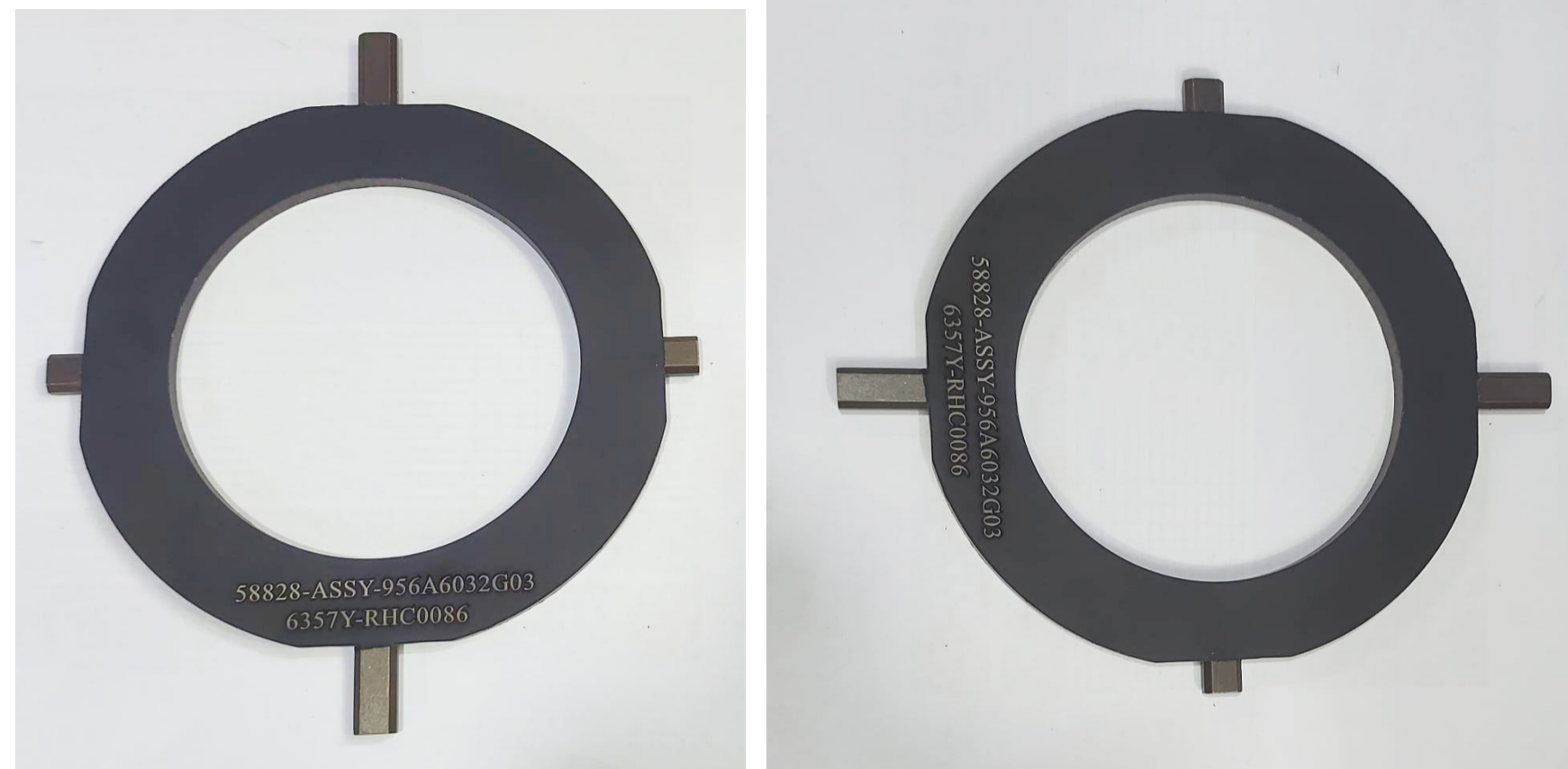
FIXTURE REMOVE-NO 04 SEAL RUNNER



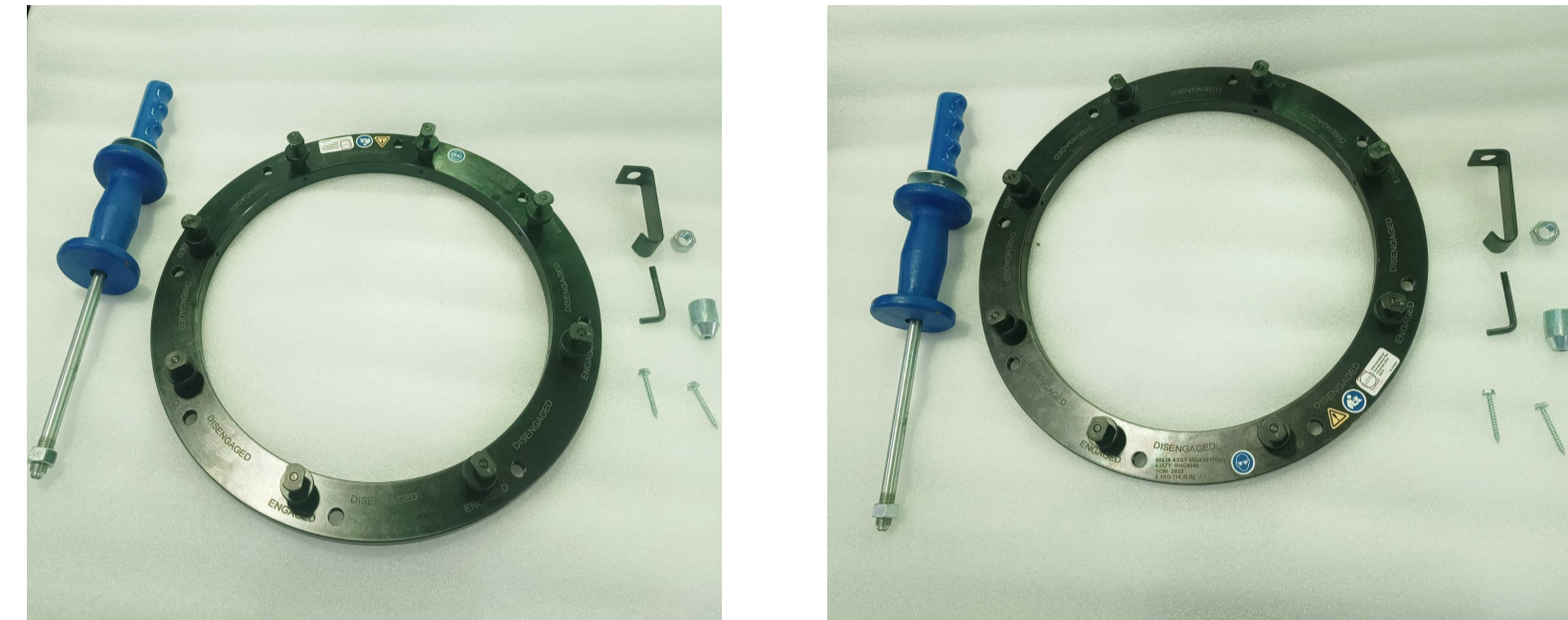
FIXTURE REMOVE-NO 04 SEAL RUNNER



FIXTURE,CHECK ALIGNMENT-NUT



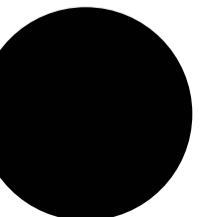
RETAINER, BLADE-SLAVE HPT ROTOR-STG 2



RETAINER, BLADE-SLAVE HPT ROTOR-STG 2



RETAINER, BLADE-SLAVE HPT ROTOR-STG 2



# Certification



## CERTIFICATE

Occupational Health & Safety Management System of:

### Multi Tech Tools

No. 46, 47, Perumal Nagar,  
Thirumudivakkam, Pallavaram,  
Kanchipuram - 602109  
Tamilnadu, India

Has been assessed and found to meet the registration requirements of:

### ISO 45001:2018

The certificate is valid for the following scope of operation:

### Manufacture & Supply of Cutting Tools & Machined Components

Certificate Registration No. : G006421

Date of 1st Surveillance Due : 29.06.2022	Issue Date : 29.07.2022
Date of 2nd Surveillance Due: 29.06.2023	Issue No. : 02
Date of re-certification Due : 29.06.2024	* Valid Until : 29.07.2023





**AGQR Certifications Private Limited**

CB Address: A-6, A.P Abhinava, Goodwill Apartments, Kavimani Salai, Mogappair West, Chennai-600 037  
Ph: 044 2653 5631 / [www.agqrcertifications.com](http://www.agqrcertifications.com)  
AGQR is Accredited by: Singapore Accreditation Services for Certification Bodies (SACB), 17, Phillip Street,  
# 05-01, Grand Building, Singapore (048695) / [www.sacb.sg](http://www.sacb.sg)

\* This Certificate is valid for three years subject to the successful completion of two annual surveillance audits. A new certificate with an extended validity will be issued there after.  
Please Check / Re-check the validity at the above mentioned CB / Accreditation Board Address or Website  
This Certificate remains the proprietary of AGQR Certifications Private Limited and shall be returned immediately upon request. This issue of the certificate does not bestow any legal Right



## CERTIFICATE

Management system as per  
**ISO 9001 : 2015**

The Certification Body TÜV INDIA hereby confirms as a result of the audit, assessment and certification decision according to ISO/IEC 17021-1:2015, that the organization

**MULTITECH TOOLS**  
No: 46 - Perumal Nagar, Thirumudivakkam,  
Chennai - 600 044, Tamil Nadu,  
India



operates a management system in accordance with the requirements of ISO 9001:2015 and will be assessed for conformity within the 3 year term of validity of the certificate

Scope -

**Manufacture of Valve Machined Components, Cutting Tools, Components for General Engineering.**

Certificate Registration No. QM 07 01306	Valid from 14.04.2023
Audit Report No. Q 12410/2023	Valid until 13.04.2026
	Initial certification 14.04.2023



Certification Body  
at TÜV INDIA PVT. LTD

Mumbai, 14.04.2023

TUV India Pvt. Ltd., 801, Raheja Plaza - 1, L.B.S. Marg, Ghatkopar (W), Mumbai - 400 086, India [cert\\_helpdesk@tuvindia.co.in](mailto:cert_helpdesk@tuvindia.co.in)





# Clients



TATA MOTORS

ILJIN



Bray CONTROLS

# Contact Us



+91 98412 82753  
+91 72993 63568



46,47, Perumal  
Nagar, Thirumudivakkam,  
Pallavaram, Kanchipuram Dist.  
- 602 109.



hari@multitechtools.in  
dinakaran@multitechtools.in